

# PRO-HC

Use this rugged, cost-effective, and professional-grade Wi-Fi controller for residential and light commercial applications.

Try Hydrawise Software today at [hydrawise.com](http://hydrawise.com).

## KEY BENEFITS

- Number of stations:
  - 6, 12, or 24 (fixed models)
- Standard programming option allows for 6 independent irrigation programs and 6 start times per program
- 2 sensor inputs available for use with any Clik Sensor and HC Flow Meter
- 1 P/MV output for pump start relay and master valve activation
- Wi-Fi enabled for quick connection to Hydrawise® Software
- 2¾" full-color touchscreen display for Wi-Fi setup, zone testing, and offline programming at the control panel
- Built-in milliamp sensor for wire fault detection and alerts

## OPERATING SPECIFICATIONS

- Transformer input: 120 VAC
- Transformer output (24 VAC): 1 A
- Controller maximum current draw: 0.8 A
- Station output (24 VAC): 0.56 A
- P/MV output (24 VAC): 0.28 A
- 2.4 GHz (only) Wi-Fi router compatible, 802.11 b/g/n 20 MHz
- Supported security protocols: WPA/WPA2 Personal (only) TLS, SSL
- Approvals: IP44 (outdoor), UL, cUL, FCC, CE, UKCA, RCM, ISED
- Warranty period: 2 years

## USER-INSTALLED OPTIONS

- Wireless HC Flow Meter option permits wireless flow monitoring for Hydrawise-enabled systems

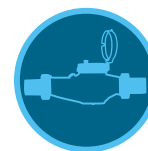


### Pro-HC

(indoor/outdoor)  
Height: 9"  
Width: 10"  
Depth: 4"

PRO-HC	
Model	Description
PHC-600	Fixed 6-station, plastic outdoor wall mount
PHC-1200	Fixed 12-station, plastic outdoor wall mount
PHC-2400	Fixed 24-station, plastic outdoor wall mount

Compatible with:



HC Flow Meter



Rain-Clik  
Sensor



PXSUNC  
Accessory  
[Visit fxl.com](http://Visitfxl.com)



### EPA WaterSense® Approved

Recognized as a responsible water-saving tool by the U.S. Environmental Protection Agency