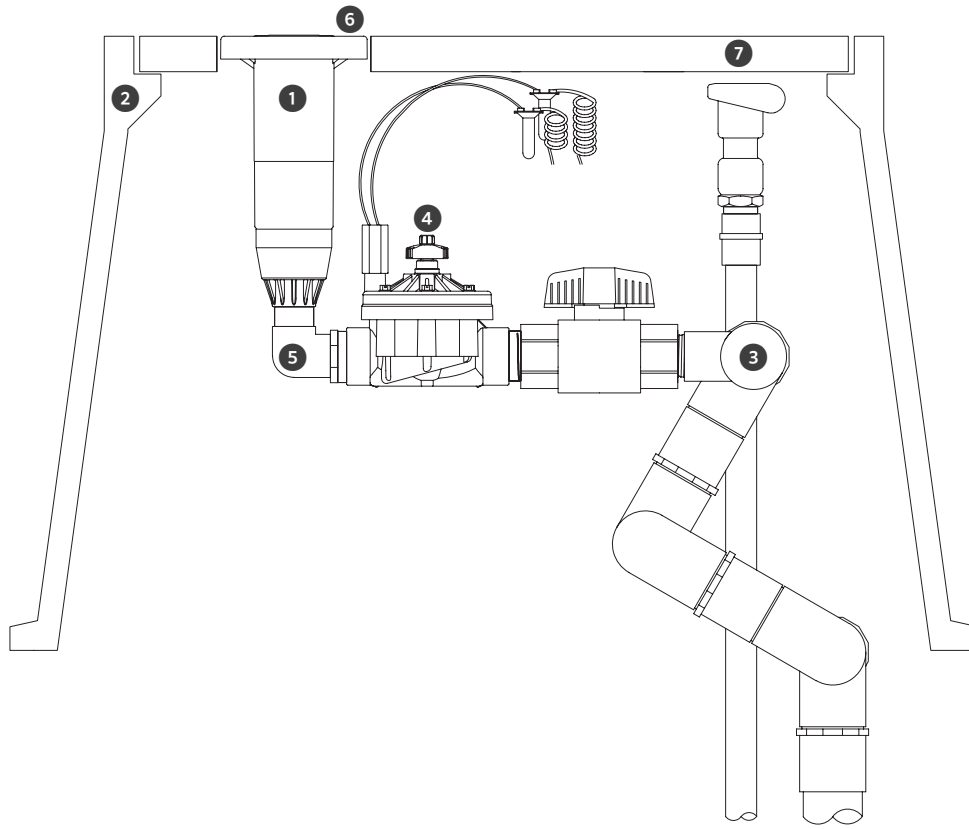


STG-900-KIT | Reference Guide



STG-900-KIT Components

FIGURE	COMPONENTS TO ORDER	QTY	ITEM DESCRIPTION
1	STG-900-83	1	Pop-up, top serviceable, adjustable arc (40°–360°), 1½" Acme inlet
2	ST-173026-B	1	Composite vault, pre-cast hole for rotor and quick coupler
3	ST-2008-VA	1	Vertical alignment PVC swing joint, seven pivot points, 2" female slip inlet, 1½" female Acme outlet
4	ST-VBVF-K	1	ICV-151G valve, manifold ball valve, 1½" Acme inlet, 1½" Acme outlet
5	239800	1	1½" elbow, female Acme to male Acme, connects STG-900 rotor to ST-VBVF-K
6	473900SP	1	STG-900 rubber cover kit
7	HQ-5RC	1	Quick coupler, 1" NPT inlet, 1¼" outlet for key

HUNTER INDUSTRIES | *Built on Innovation®*
 1940 Diamond Street, San Marcos, CA 92078 USA
 hunterindustries.com